

Upper River Nene & Ise Catchment Appraisal & Advice Delivery Plan

Nene Catchment Partnership

Greg Oakes
Project Manager



**A clear solution
for farmers**

ENGLAND CATCHMENT SENSITIVE
FARMING DELIVERY INITIATIVE

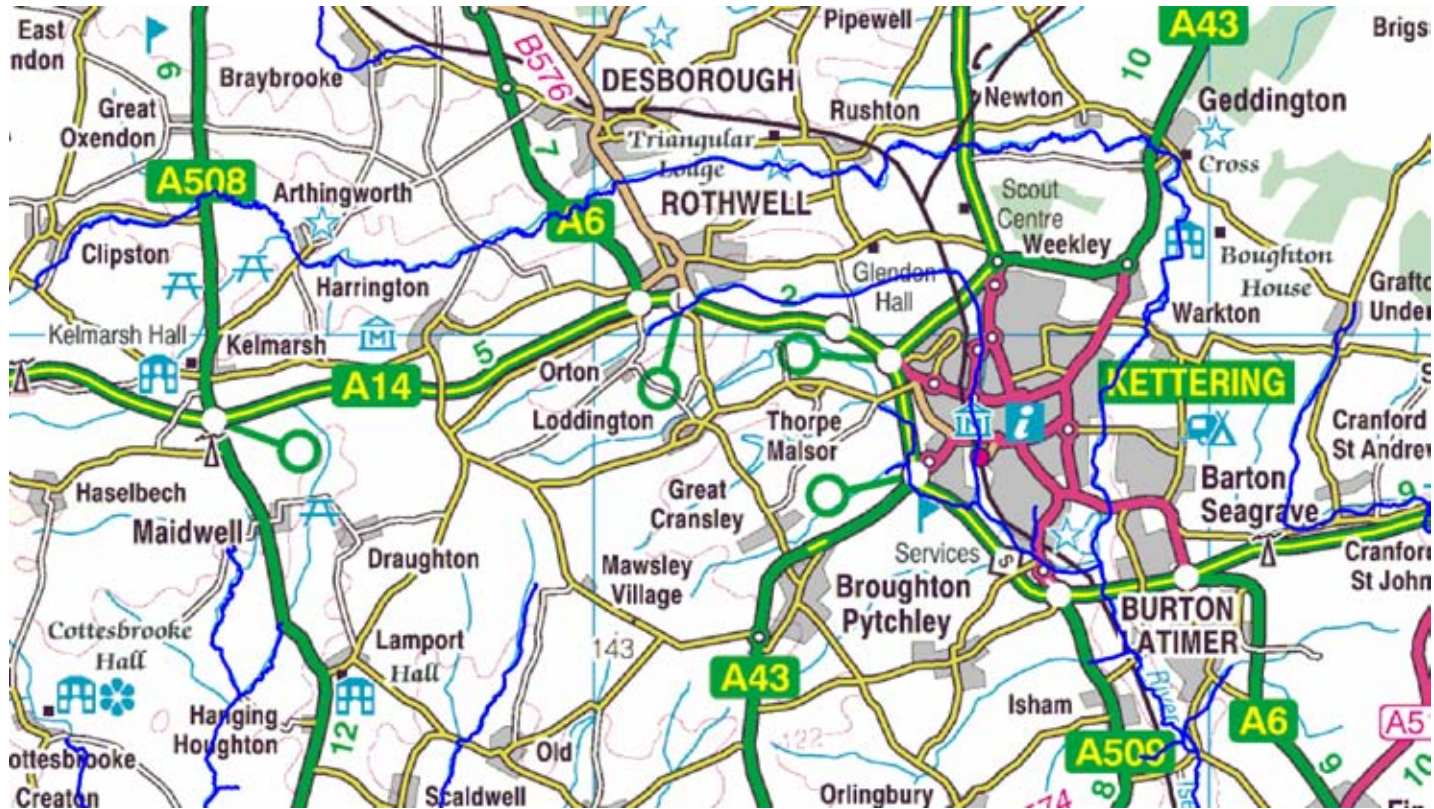


Why the Upper Nene & Ise

- Modelling identified watercourses to be at risk from sedimentation, phosphate and pesticide loading – Water Framework Directive
- Smaller upper reaches of watercourses deemed more suitable for CSF approach to tackling diffuse pollution
- Links with RNRP & EA project work
- MSG and Anglian Water – Pitsford Reservoir



Study Area – Upper Ise

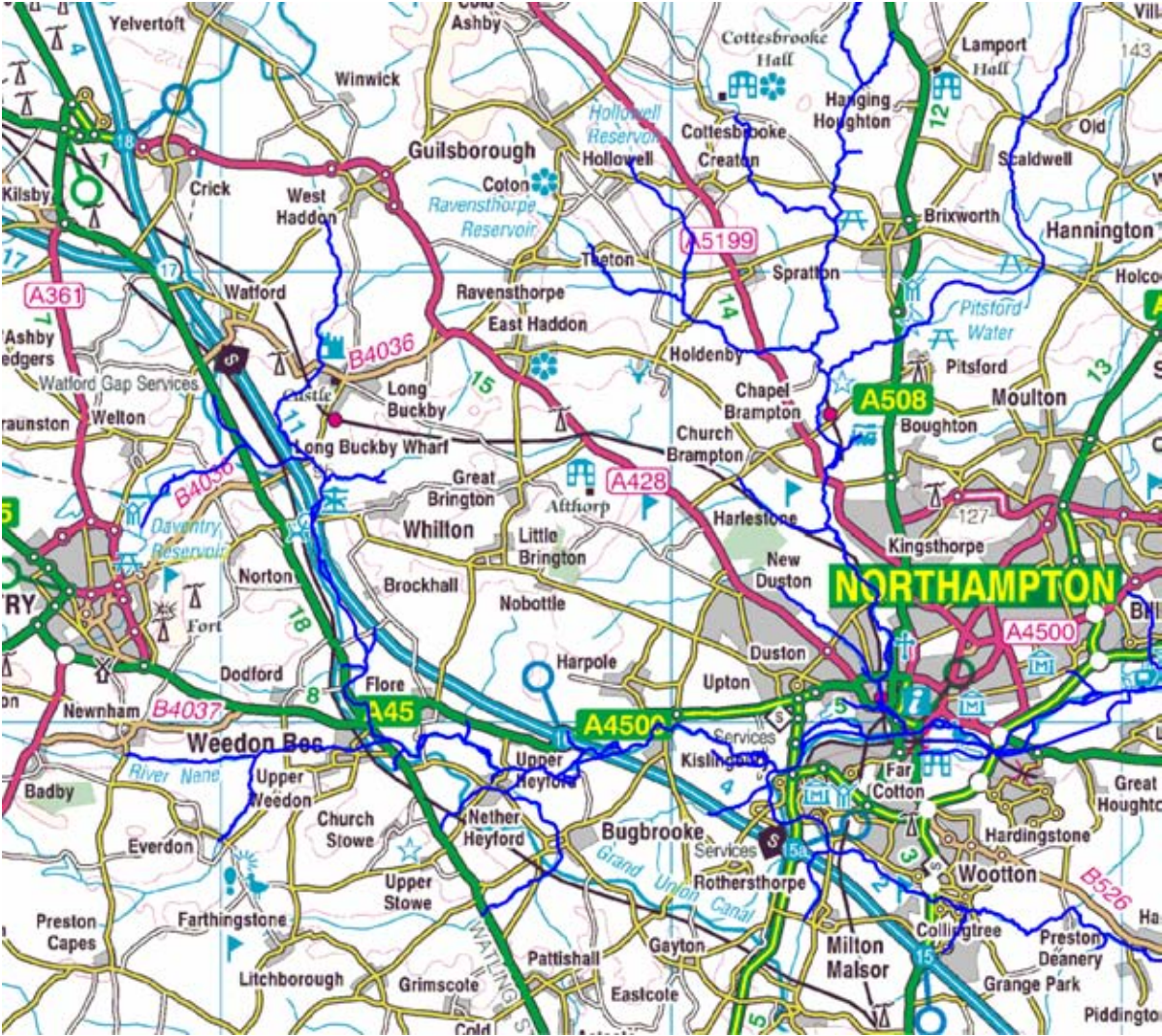


**A clear solution
for farmers**

ENGLAND CATCHMENT SENSITIVE
FARMING DELIVERY INITIATIVE



Study Area – Upper Nene



A clear solution for farmers

ENGLAND CATCHMENT SENSITIVE
FARMING DELIVERY INITIATIVE



Protected Areas at Risk

River Ise SSSI



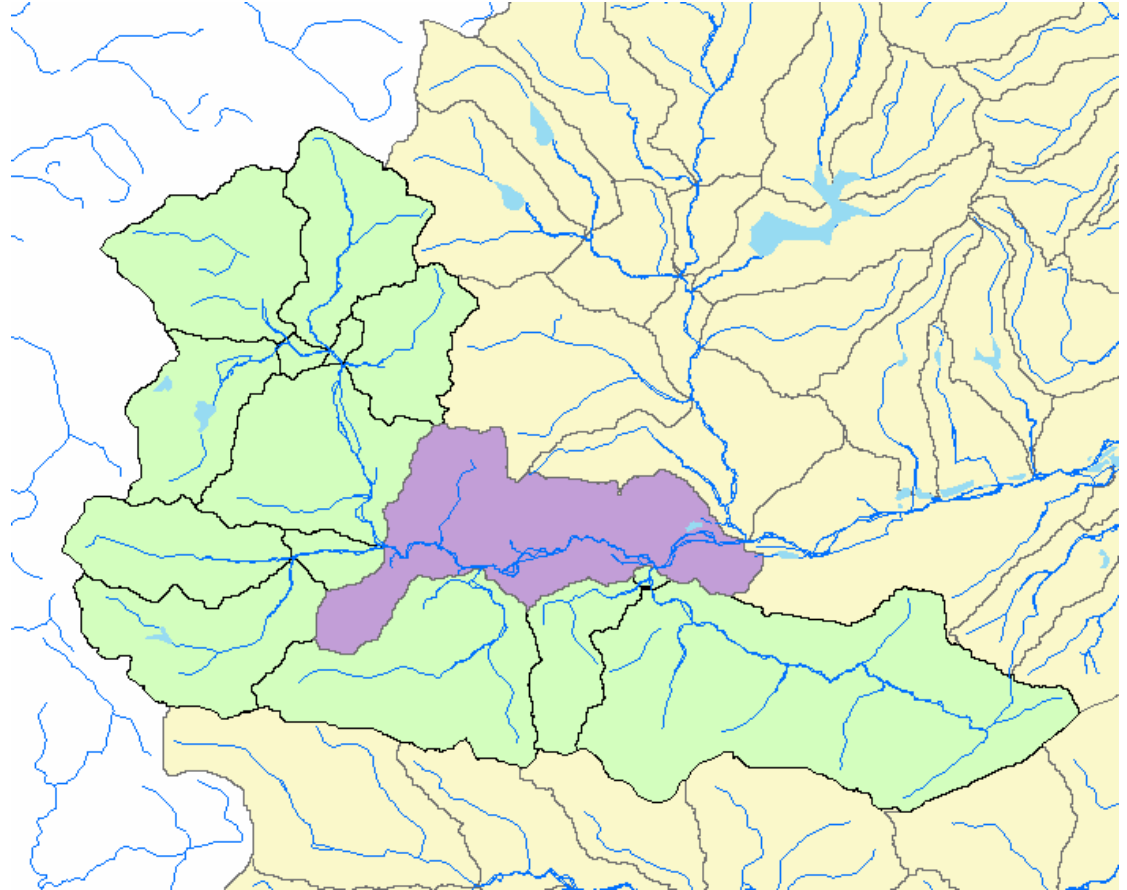
**A clear solution
for farmers**

ENGLAND CATCHMENT SENSITIVE
FARMING DELIVERY INITIATIVE



Protected Areas at Risk

Drinking Water Protected Area



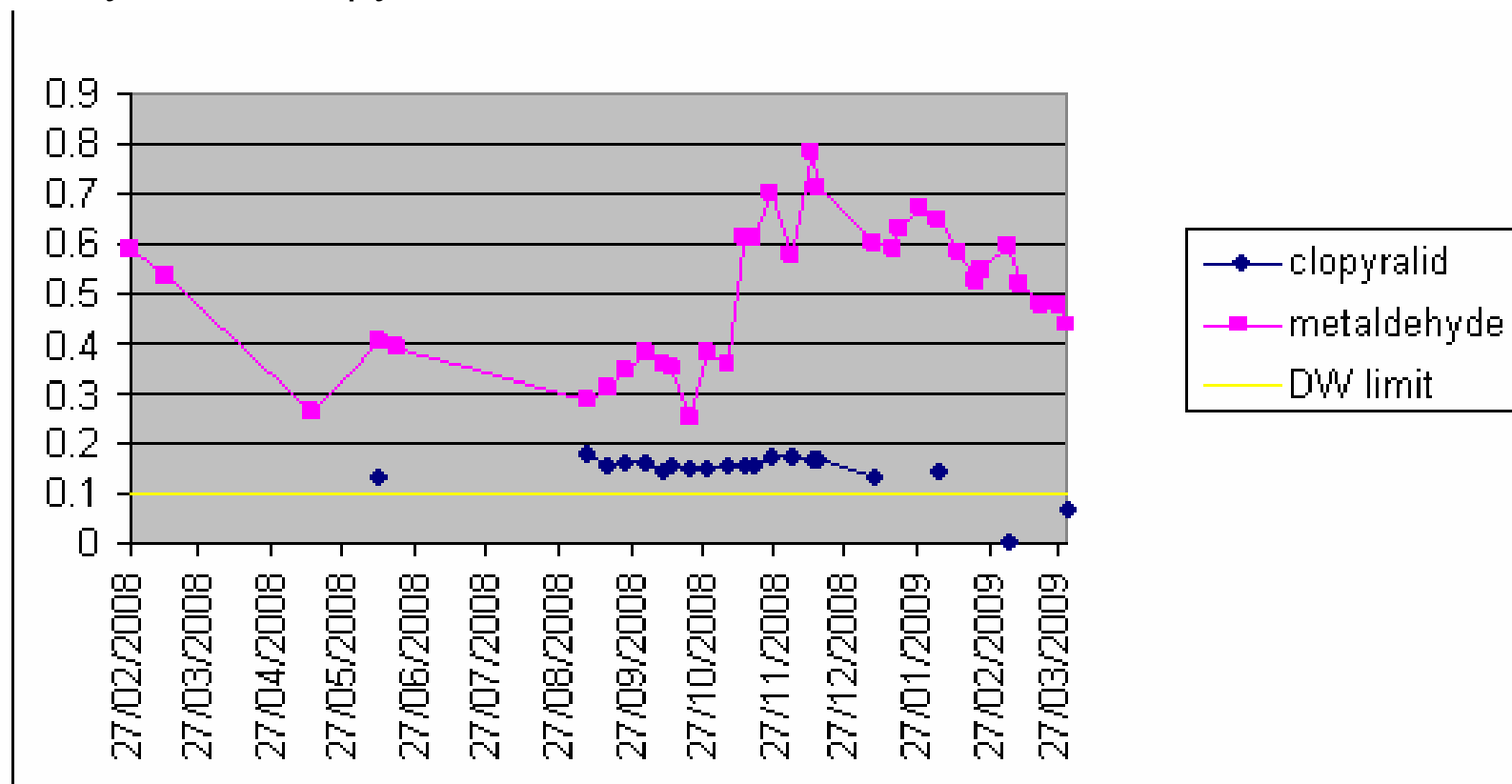
**A clear solution
for farmers**

ENGLAND CATCHMENT SENSITIVE
FARMING DELIVERY INITIATIVE



Pollution Evidence – Monitoring Data

Metaldehyde and Clopyralid



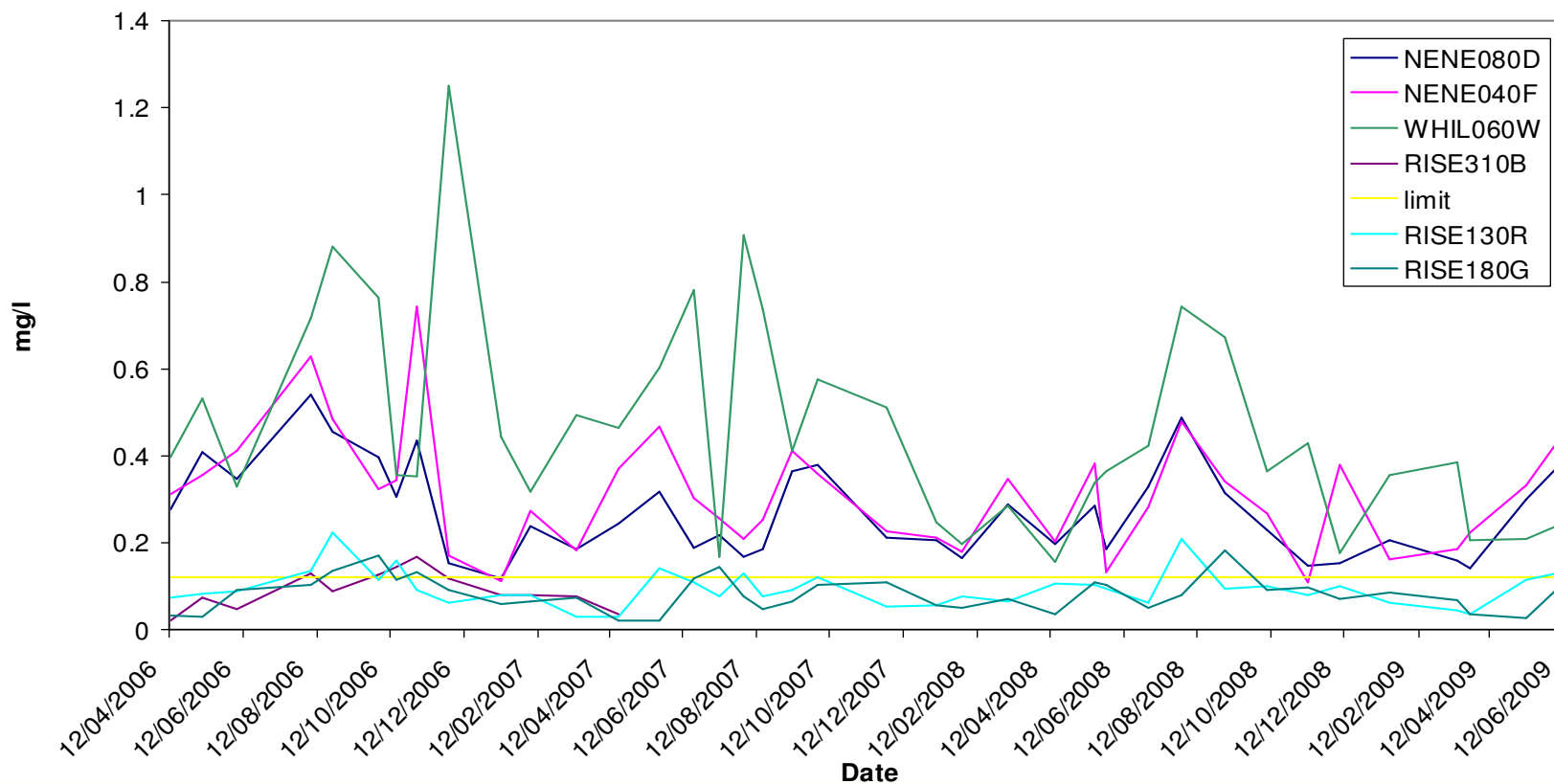
**A clear solution
for farmers**

ENGLAND CATCHMENT SENSITIVE
FARMING DELIVERY INITIATIVE



Pollution Evidence – Monitoring Data

Phosphorus as P



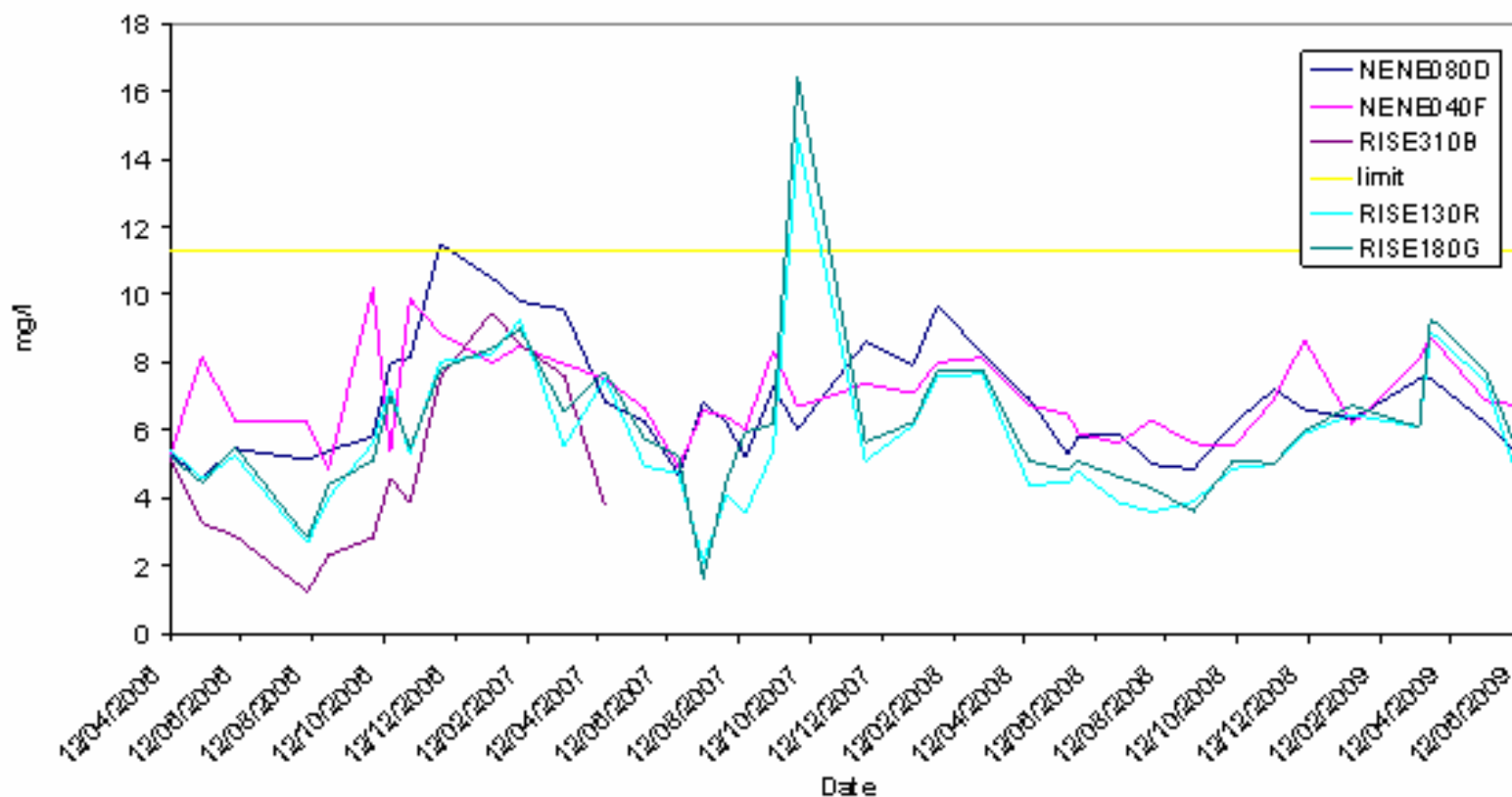
**A clear solution
for farmers**

ENGLAND CATCHMENT SENSITIVE
FARMING DELIVERY INITIATIVE



Pollution Evidence – Monitoring Data

Nitrate as N



**A clear solution
for farmers**

ENGLAND CATCHMENT SENSITIVE
FARMING DELIVERY INITIATIVE



Pollution Evidence – Monitoring Data

- Localised monitoring network set up to identify key catchments affecting water quality
- To include biological, pesticide and chemical monitoring



Potential Sources of DWPA Identified in Catchments



Surface water and sediment accumulation in a waterlogged stubble field



Compacted Wheelings



**A clear solution
for farmers**

ENGLAND CATCHMENT SENSITIVE
FARMING DELIVERY INITIATIVE



Potential Sources of DWPA Identified in Catchments



Long field for run-off generation



breached buffer and sediment deposition in the channel at the base of a long slope and flow pathway

Potential Sources of DWPA Identified in Catchments



outwintered sheep in fields adjacent to the river channel



poaching beside a drinker in a field adjacent to the river



**A clear solution
for farmers**

ENGLAND CATCHMENT SENSITIVE
FARMING DELIVERY INITIATIVE



Potential Sources of DWPA Identified in Catchments



Waterlogged vehicle wheelings



Rill development on a shallow-sloping stubble field



**A clear solution
for farmers**
ENGLAND CATCHMENT SENSITIVE
FARMING DELIVERY INITIATIVE



Conclusions

- At risk areas have been identified – DrWPA / SSSI / WFD
- Potentially contributing agricultural practices have been identified
- More local monitoring required to focus on key catchments
- Pitsford Reservoir Catchments – MSG



Advice Delivery Plan

- Projects numbers of advice delivery visits by EA & RNRP Staff as c.110
- Projects numbers of farmers engaged via Events and Contracted Advice as c.100
- **Total of 210 farmers / land-managers engaged via project**



Summary of Events Planned ??

- **March 2010** – Contracted Advice – Soil Management Plan Preparation / Review / Sampling / Analysis
- **March 2010** – Nutrient Management Practical Workshop
- **April 2010** - Contracted Advice – Nutrient Management Plan Preparation / Review / Sampling / Analysis
- **April 2010** – Slug Pellet / Fertiliser Spreader Calibration Workshop
- **October 2010** - Nutrient Management Practical Workshop
- **November 2010** - Contracted Advice – Nutrient Management Plan Preparation / Review / Sampling / Analysis
- **December 2010** – Soils Protection Review Workshop
- **January 2011** - Contracted Advice – Soil Management Plan Preparation / Review / Sampling / Analysis



**A clear solution
for farmers**

ENGLAND CATCHMENT SENSITIVE
FARMING DELIVERY INITIATIVE

